



32T HYDRAULIC BOTTLE JACK CT0318



ORIGINAL INSTRUCTION

Cannon Tools Limited

Address: 20 Station Road, Rowley Regis, West Midlands, B65 0JU. UNITED KINGDOM

Please read the entire instruction manual before using the product and then save it for future reference.

EC DECLARATION OF CONFORMITY

We CANNON TOOLS LTD

20 Station road, Rowley Regis, West Midlands, B65 0JU.U.K.

Declare that the following machine complies with the appropriate basic safety and health requirements of the EC Directive based on its design and type, as brought into circulation by us.

In case of alteration of the machine, not agreed upon by us, this declaration will lose its validity.

Product description: 32T HYDRAULIC BOTTLE JACK

Model: CT0318

Applicable EC Directives:

EC Machinery Directive 2006/42/EC

Harmonized standards

EN ISO 12100:2010, EN 1494:2000+A1:2008

20 Station Road, Rowley Regis, West Midlands, B65 0JU.U.K.

Mr. Gurcharan Tony Singh Sanghera

Managing Director

CANNON TOOLS LTD



2021-07-27

1. SPECIFICATIONS

Capacity: 32 Ton
Min. Height: 255 mm
Lifting Height: 160 mm
Net weight: 17.8kg

2. GENERAL SAFETY INSTRUCTIONS

1. The vehicle to be lifted should never exceed the rated capacity of the jack.
2. The maximum lift height of the jack indicated on the label should never be exceeded.
3. The jack should be supported on a solid, level and horizontal surface which is well illuminated and free of obstructions. Never stand the jack on a surface which may sink, concrete is preferred.
4. Ensure that there are no persons inside the vehicle to be lifted. Switch off the engine and apply the brake. Ensure the vehicle, or element to be lifted is protected against any type of sliding. Use chocks if appropriate. Do not enter the vehicle or start the engine whilst it is supported on the jack or appropriate stands. The jack is a lifting device only and should never be used to move the vehicle.
5. Ensure a minimum distance of 0.5m between vehicle and static objects such as doors, walls, etc. to allow for tilting during jacking.
6. Position the jack under the manufacturer's recommended lifting point for the vehicle and ensure that it is not corroded, dirty or greasy. This point should remain centred over the jack saddle. All off-centred loads can slip and accidents may result.
7. During raising and lowering of the load, all precautions should be taken to avoid movement of the vehicle load. Traffic may cause the raised vehicle to rock during roadside use of the jack.
8. The jack should be positioned so as to avoid the need for the user to introduce any part of his/her body underneath the vehicle. Never work under a raised vehicle without supporting it with axle stands or other appropriate methods. Never position any part of your body near the movable elements of the jack.
9. It is necessary for the operator to be able to observe the lifting device and the load during all movements. In the presence of dangerous conditions, such as movement of the vehicle, etc, the lifting process must be interrupted or stopped immediately.
10. Ensure that there are no persons or obstructions underneath the vehicle prior to lowering.
11. No modifications of any type are advised or allowed with this product.
12. DO NOT operate the jack when you are tired, under the influence of alcohol, drugs or intoxicating medication.
13. Ensure there are no persons or obstructions beneath the vehicle before lowering.
14. Clean and securely stow the jack with the ram in the down position. DO NOT leave the ram extended.
15. When not in use, store the jack in a safe, dry, childproof area.

WARNING! Remember, it is very dangerous to go under a vehicle supported by a jack even if additional supports are used.

3. OPERATION

The owner and/or operator is responsible for providing maintenance, maintaining all decals or warning labels and while in use, maintaining the unit in good work order.

The jack shall be inspected per the instruction manual prior to use.

It is the owner and/or operators responsibility to study all warnings, operating and maintenance instructions contained on the product label and instruction manual prior to operation of this unit, the owner/operators shall retain product instructions for future reference.

Raising Vehicle:

1. Make sure the jack and vehicle are on a hard level surface.
2. Always set the vehicle parking brake and block the wheels.
3. Consult the vehicle owners manual to ascertain the location of jack points and position the jack beneath the prescribed lift point.
4. Turn the release valve clockwise to the closed position. **DO NOT OVER TIGHTEN!**
5. To raise the vehicle to designed height, place the handle into the socket and pump up and down.
6. Place jack stands beneath the vehicle at locations recommended by the vehicle manufacturer. Do not get under the vehicle without jack stands. Jacks are not designed to maintain heavy loads for long periods of time. Do not attempt to put jack stand simultaneously under both ends of vehicle or under one side of vehicle.
7. Turn release valve **SLOWLY** counterclockwise to lower load onto jack stands.
- 8.

Lowering Vehicle:

1. Turn the release valve clockwise to the closed position.
2. Pump the handle to lift vehicle off of jack stands.
3. Remove the jack stands. Do not get under or let anyone else under the vehicle while lowering.
4. Turn the release valve **SLOWLY** counterclockwise to lower the vehicle onto the ground.

4. INSPECT

The product shall be maintained in accordance with the product instructions.No alterations shall be made to this product.

1. Before use, a visual inspection of the jack should be made for abnormal conditions such as cracked welds,damage, bent, worn, loose or missing parts, or hydraulic leaks.
2. Inspections shall be performed in accordance with this manual.
3. The product shall be inspected immediately if the jack is believed to have been subject to an abnormal load or shock. It is recommended that this inspection be made by an authorized customer service representative prior to use.

5. MAINTENANCE

Monthly maintenance is recommended.Lubrication is critical to jacks as they support heavy loads.Any restriction due to dirt, rust, etc., can cause either slow movement or cause extremely rapid jerks,damaging the internal components.The following steps are designed to keep the jack well lubricated:

1. Lubricate the ram, linkages, saddle and pump mechanism with light oil. Grease wheel bearings and axles.
2. Visually inspect for cracked welds, bent, loose,missing parts or hydraulic oil leaks.
3. If jack is subjected to abnormal load or shock, remove from service and have it examined by a customer service representative prior to use.
4. Clean all surfaces and maintain all labels and warnings.
5. Check and maintain the ram oil level.

6. Check ram every 3 months for any sign of rust or corrosion. Clean as needed and wipe with an oil cloth. When not in use, always leave the saddle and ram all the way down. Always store your jack in the fully lowered position. This will help protect critical areas from excessive corrosion. Do not use brake or transmission fluids or regular motor oil as they can damage the seals. Always purchase and use products labeled Hydraulic Jack Oil.

Check oil level

1. Turn release valve counterclockwise to allow ram to fully retract. It may be necessary to apply force to the saddle for lowering.
2. With the jack in the level position, remove the oil fill plug. Stand jack in vertical position with handle socket down. The oil should be level with the bottom of fill hole. If not, top off. Do not overfill. Always fill with new, clean hydraulic jack oil.
3. Replace fill plug.
4. Check jack operation.
5. Purge air from system as required.

6. TROUBLE SHOOTING

Jack will not lift load	Jack will not hold load	Jack will not lower	Poor jack lifting	Will not Lift to full extension	Cause and solutions
×	×		×		Release valve is not completely closed. (Turn handle clockwise)
×					Weight Capacity Exceeded.
×			×		Air is in the hydraulics. Purge air from system.
×	×		×	×	Low oil level. Add oil as required.
		×			oil reservoir is overfilled. Drain excessive oil. Lubricate moving parts.
		×			Jack is binding or foreign obstruction.
×	×		×		Power unit malfunctioning. Replace the power unit.

7. DISPOSAL







At the end of the machine's working life, or when it can no longer be repaired, ensure that it is disposed of according to national regulations.

- Contact your local authority for details of collection schemes in your area. In all circumstances:

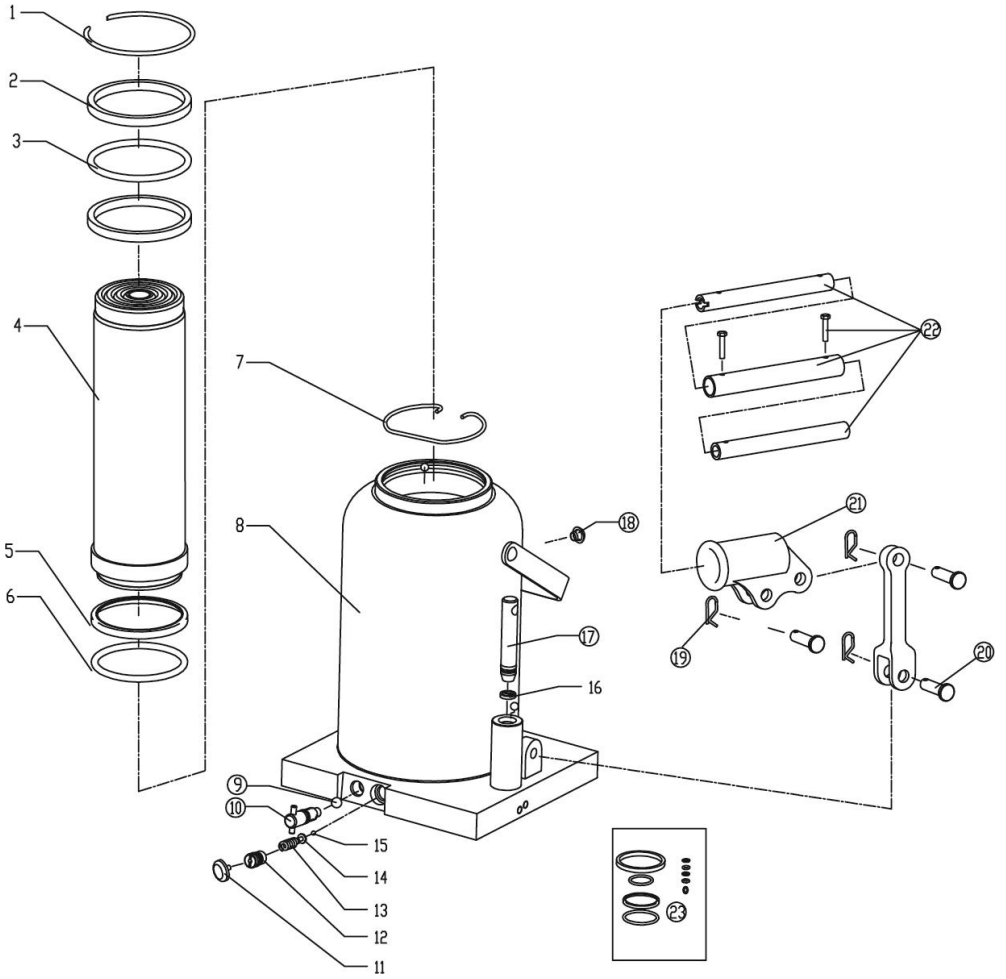
- Do not dispose of tools with domestic waste.
- Do not incinerate.

8. EXPLANATION OF SYMBOLS

In this manual and/or on the machine the following symbols are used:

	Denotes risk of personal injury, loss of life or damage to the tool in case of non-observance of the instructions in this manual.
	First read the instruction manual.
	Wear safety helmet.
	Wear safety goggles.
	Wear gloves.
	In accordance with essential safety standards of applicable European directives

9. EXPLODED VIEW



Ref.	Description	QTY
1	Roundwire snap ring	1
2	Rectangular ring	2
3	O-Ring	1
4	Piston rod assembly	1
5	Bowl washer	1
6	O-Ring	1
7	Roundwire snap ring	1
8	Base welding parts	1
9	Steel ball 6mm	3
10	Release valve assembly	1
11	Plastic plug	1
12	Adjusting screw	1
13	Spring	1
14	Spring holder	1
15	Steel ball 3mm	1
16	Ball retaining washer	1
17	Pump plunger assembly	1
18	Oil plug	1
19	Cutter pin	3
20	Pin	3
21	Handle socket	1
22	Handle assembly	1
23	Seal kit	1

CANNON TOOLS LTD

Add: 20 station road, Rowley Regis, west midlands,B65 0JU.U.K.

Made in China